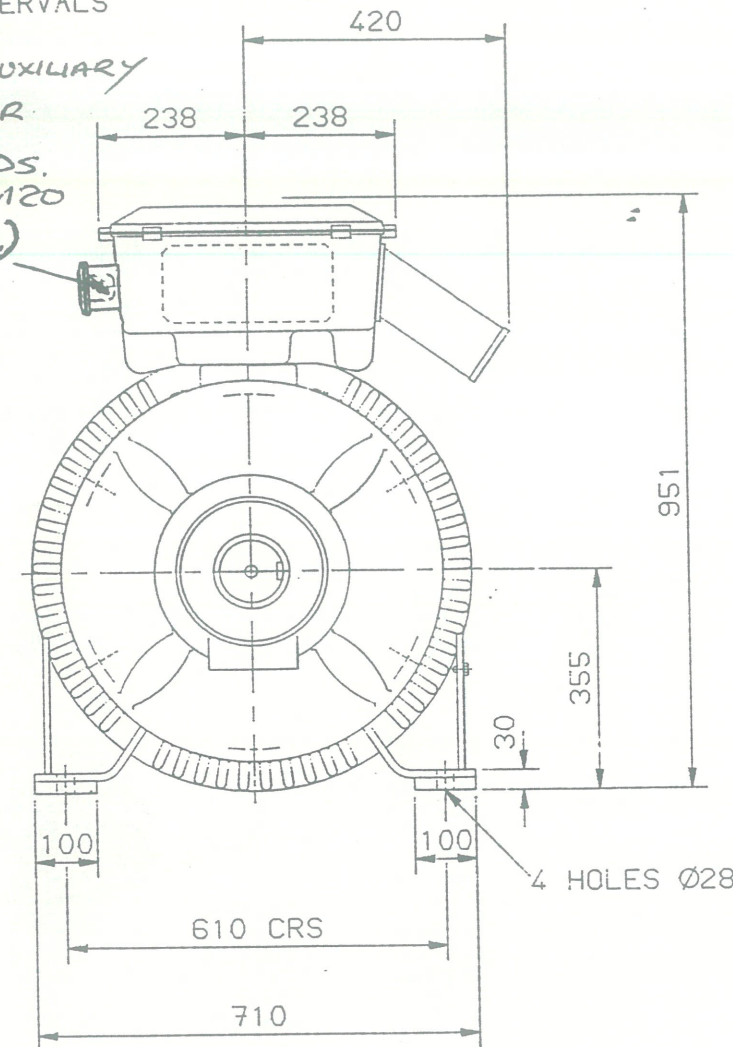
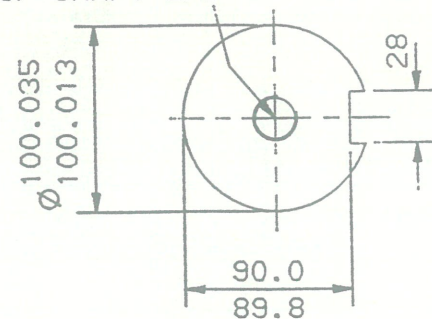


NOTE! CABLE ENTRY CAN BE SUPPLIED IN ANY ONE OF FOUR POSITIONS AT 90° INTERVALS

ONE SEPARATE AUXILIARY TERMINAL BOX FOR THERMISTOR LEADS. CABLE ENTRY 1xM20 CONDUIT (I.S.O.)



TAPPED HOLE  
M24x50 DEEP  
UP SHAFT END



ENLARGED DETAIL OF  
SHAFT EXTENSION  
(SCALE 1:4)

NOTE! SUFFIX LETTERS TO THE NUMBER 7 IN THE FRAME SIZE DO NOT AFFECT THE EXTERNAL DIMENSIONS.

CUSTOMER **BROOK HANSON (CANADA) INC**  
ORDER No.   
SERIAL No. **GE019003/11**  
FRAME SIZE **7-AD355S**  
kW **110** RPM. **1485**  
Hz **50** PHASE **3**  
VOLTS **380 ± 5% DATA** POLES **4**  
BRGS. **N324-C3** DE. **6316-C3** NDE.  
MOTOR NETT. WT. **1225** Kg.  
REMARKS

FIRST ANGLE PROJECTION,  
ALL DIMENSIONS IN MILLIMETRES

**BROOK CROMPTON**

Large Industrial Motors  
Guiseley, Leeds

NOTE 1  
2.5 ENDPLAY WILL BE PROVIDED FOR ENDTHRUST PROTECTION WHEN CUSTOMERS NOTIFY US OF THEIR INTENTION TO USE RIGID COUPLINGS AND DRIVEN MACHINES WITHOUT ENDPLAY.

OUTLINE DIMENSIONS OF STANDARD FOOT MOUNTED METRIC A.C. MOTOR TO BS.4999 PART 141. TOTALLY ENCLOSED FAN VENTILATED. DEEP FAN & FAN COVER, FRAME SIZE :- 7-AD355S (4 POLE UP).

SCALE	1:12	DATE
DRAWN	LCG	
CHECKED	MBC	
APPROVED	MBC	

REVISION:   
DATE